

PRM2830 Pipe Inspection Solution



● IP54 water & dust proof ●



Rugged IP68 level waterproof Super bright LED on camera.



Compact portable design.



Vertical / Horizontal usage hinge

PROFESSIONAL IMAGE QUALITY



SUPER-WIDE VIEW CAMERA LENS

150° camera lens provides maximum inspection area.

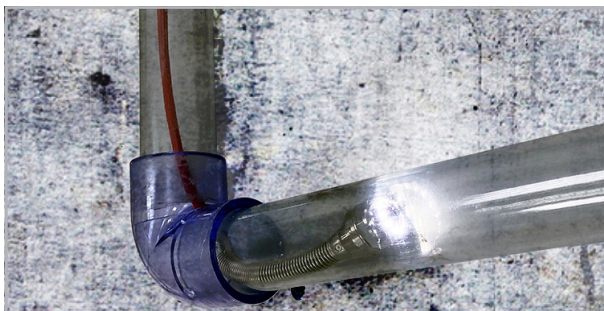
High-Definition image output

Capture & record super clear, crisp images.

Digital meter on screen

Display the distance of probe inserted into the inspection.

ACCESSORY-CENTERING DEVICES

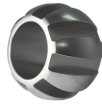


30 m flexible cable can pass 90 degree conner.



50 mm metal ring designed for 2 inch pipeline insertion.

ACCESSORIES



Ø50mm metal ring



Ø100mm brush



Ø150mm brush



Aluminum carry case



DC Adaptor



USB cable



HDMI cable



micro SD card

SPECIFICATIONS

Monitor

Model	X600
Dimension	161.93 (mm) x 127.93 (mm) x 46 (mm)
Weight	705g
Display	5" Touchscreen 800x480 pixels
Power supply	Rechargeable Li-battery
Video output	Micro HDMI
Working time	Approximately 3.5 hours of operation
Charging time	Approximately 2.5 hours
Data transfer/Charging	USB-C
DC Power adapter	Input:100-240V~0.5A; Output: 5V/3A(15W)
Phone Jack	Built-in microphone
Storage	Micro SD up to 64GB
Image Format	JPEG, 1920x1080
Video Format	MP4, 1920x1080
IP Rating	IP54
Drop resistance	1 meter
Operating temp.	-10°C~50°C
Storage temp.	Generally storage under 60°C
Charging temp.	0°C~40°C

Probe

Model	2830HD-F-30M-FRP
Diameter	28.0 mm
Length	30 m
Direct of view	Front view
Illumination	Front LEDs
FOV(Field of View)	150°
DOF(Depth of Field)	20 mm~∞
Probe head material	Stainless steel
Buttons	Full touch screen. No physical button
Material	FRP
Liquid resistance	Unleaded gasoline, diesel, machine oil, brake oil, transmission oil, water
IP Rating	IP68
Working temp.	-10°C~60°C
Storage temp	Generally storage under 60°C
Relative humidity	Max 95% non-condensing